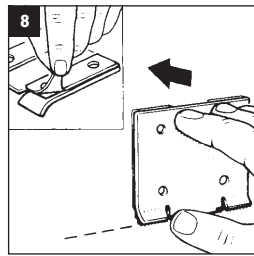
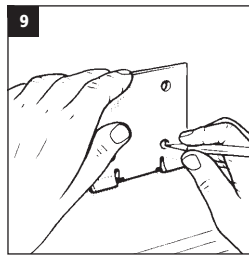


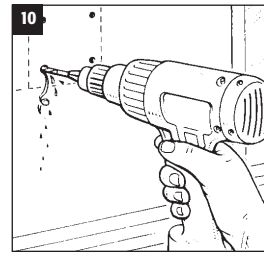
Claw mounting bracket Self adhesive pad fixing
If there is no suitable fixing on the RV for the bottom claw a claw mounting bracket is supplied. Locate claw mounting bracket (G) to side of vehicle free of internal structural features such as cables and seals, so that clamp face of claw is level with clamp face of bracket and mark its position.



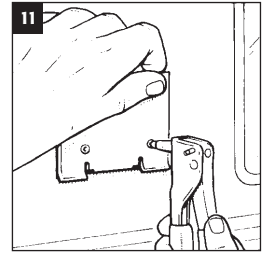
Fix the 2 self adhesive pads (H) on the rear of the bracket and then fix into position. Ensure bottom hooks face forward.



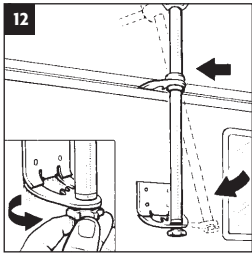
Permanent fixing
For a more secure fixing we recommend screw or rivet fixing. Mark screw/rivet fixing hole positions using bracket as a template.



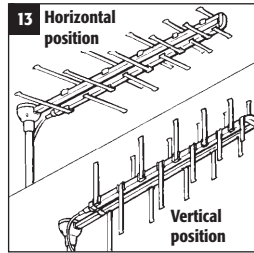
Drill 3.0mm holes, fix the 2 self adhesive pads on the rear of the bracket, then locate and fit the 4 self tapping screws (I) to fix into position. Do not overtighten.



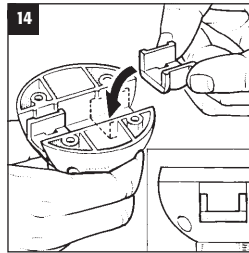
Alternatively use 4.8mm rivets of an appropriate length.



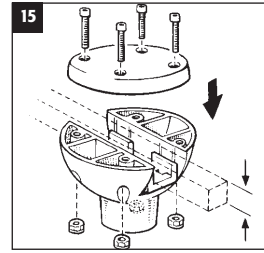
Offer the mast assembly up to the RV and adjust height of top claw and clamp ring to optimise installation. Tighten ring clamp and push up the anti drop ring to retain top claw. Locate top clamp to awning rail or other suitable rail/rack/feature. Locate bottom claw under claw mounting bracket and follow instruction 6 to ensure mast is vertical.



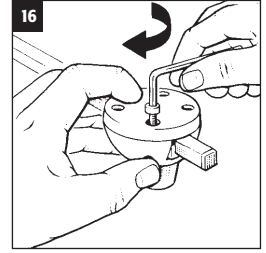
Fitting the mast boom clamp to the aerial
Determine the aerial mounting position, as this will affect how to fit the mast boom clamp. Main transmitters broadcast horizontally and relay transmitters vertically. Therefore aerials should be pointed towards the transmitter in either horizontal or vertical mode. Look at other aerials on your site to see which direction they are pointing.



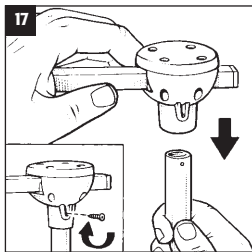
If aerial has 15mm boom, place two black boom width adjustment inserts (N) into mast boom clamp base (O).



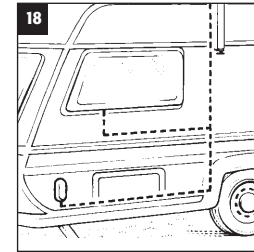
Locate mast boom clamp base onto aerial boom. Insert screws (Q) into mast boom clamp lid (P).



Locate nuts into hex feature on underside of mast boom clamp base. Using 3mm Allen key (S) supplied fasten screws into nuts.



Fit mast boom clamp onto top of mast by lining up slot in the clamp with the hole in the mast and fix firmly by screwing screw (R) through the mast boom clamp into the mast.



Secure aerial lead to mast as required. Route cable to position of entry in caravan/motorhome either via Weatherproof TV Aerial Socket or through an open window.

GUIDELINES FOR THE BEST RECEPTION

- Choose a site position where the aerial can be mounted as high as possible with a clear line of site pointing in the direction of the transmitter with no obstructions e.g. trees, buildings, blocking the view.
- TV pictures will improve with height and the less obstruction between the aerial and the transmitter the better.
- To route the cable from the aerial to the TV inside the vehicle the use of a weatherproof outlet socket is recommended.
- For the best interference free reception, do not run coaxial cable in parallel with electrical or other power cables.
- The quality of picture may be improved by fitting a signal booster.

SAFETY WARNING

- Always follow manufacturer's operating and safety instructions when using tools and/or equipment.
- To avoid injury always route cables and wiring carefully.
- It is recommended that your mast and aerial are removed whilst travelling.

Maxview reserve the right to change specifications without prior notice.

MAXVIEW LIMITED
SETCHEY, KING'S LYNN
NORFOLK, PE33 0AT, ENGLAND
CUSTOMER HELPLINE
(01553) 811000
e-mail: cust_serv@maxview.ltd.uk
website: www.maxview.ltd.uk