

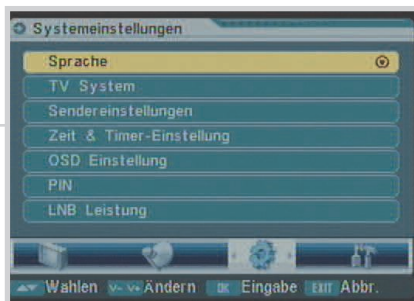
Change language

1



If your receiver has been reset to the factory default setting and this screen is shown when the receiver is tuned on you will need to change the language setting from German to English

2



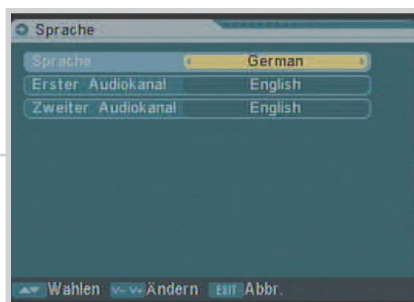
Press the **MENU** button on the remote.

Press the **VOLUME UP/DOWN** key until this screen is shown.

Press the **CHANNEL UP/DOWN** key until the Sprache box is highlighted.

Press the **OK** button to select.

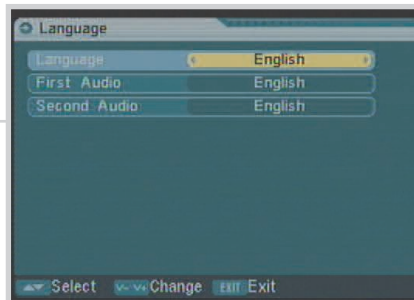
3



Press the **CHANNEL UP/DOWN** keys until the *Sprache* box is highlighted.

Use the **VOLUME** keys to scroll through the languages.

4



When English has been highlighted press **EXIT**.

For more information on our vast range of leisure products, please request a copy of our **leisure catalogue**.



MAXVIEW

Maxview Limited (UK head office) ■ Common Lane ■ Setchey ■ King's Lynn ■ Norfolk ■ PE33 0AT ■ England
Customer Helpline +44 (0)1553 811000 ■ **e-mail** cust_serv@maxview.co.uk ■ **website** www.maxview.co.uk

Maxview reserve the right to change specifications without prior notice.

MXL014L Iss 1

MAXVIEW 'FREE TO AIR' DIGITAL SATELLITE RECEIVER

MXL014

FOR USE IN THE UK
& CENTRAL EUROPE

1 YEAR
GUARANTEE

1
YEAR
G
WARRANTY



Quick Start Guide

Please use this quick start guide in conjunction with the operating manual following the recommended safety precautions.

Your FTA receiver is pre-programmed with channels from several different satellites. The majority of UK channels are broadcast from the Astra 2 satellite. This guide will show you:

How to display only ASTRA 2 channels
Use your receiver to help position your satellite antenna
Scan for new TV and Radio channels
Change the menu language

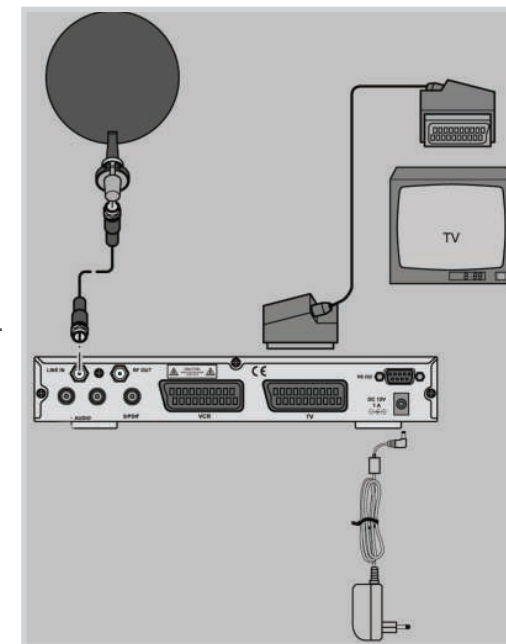
Important

If your FTA Receiver is reset to the factory default setting the OSD language reverts to German and channel list is modified. If this occurs please follow the simple steps in this guide to revert back to UK Specifications

Set up diagram

This is a simple set-up example, please refer to the user manual for more set-up examples and detailed information about using this product in a safe manner.

Note: Ensure TV is set to the AV channel. Please refer to your TV instruction manual for more information.



Display only Astra 2 channels

1



Install your satellite antenna referring to the operating manual supplied with it and install your FTA receiver as shown previously. Follow these simple steps to find the Astra 2 satellite.

When you first turn your FTA receiver on this screen will be shown.

2



Press the blue **LIST** button on the remote control to edit the *TV Channel List*.

The default channel list includes channels from a wide range of satellites. The majority of UK channels are broadcast from the Astra 2 satellite.

This menu allows you to edit the *TV Channel List* so that it displays channels from the Astra 2 satellite only.

3



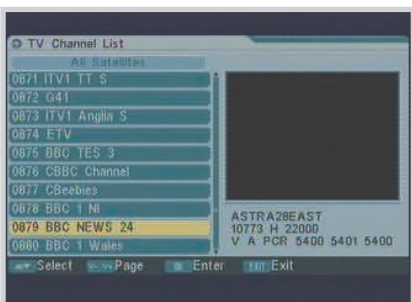
Press the **VOLUME UP/DOWN** key to scroll through the various satellites and groups until ASTRA 28 EAST is displayed below the *TV Channel List* title.

Press the **EXIT** button.

Note: You will only have to do this once. The receiver will memorise the menu change even when the power has been disconnected.

Aligning your satellite antenna

1

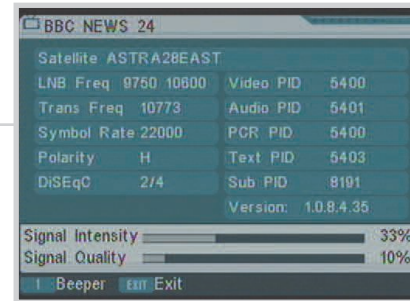


To select a channel, press the **OK** button on the remote control to display the *TV Channel List*.

Scroll through the pages of channels using the **VOLUME UP/DOWN** keys.

Use the **CHANNEL UP/DOWN** button to select your channel and press **OK**.

2



To help with the alignment of your satellite dish press the **INFO** button on the remote control.

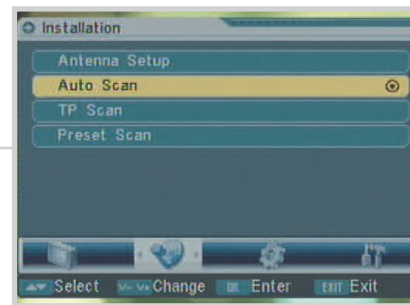
Press **1** on the remote to turn on the built-in sat-finder. The tone from the Sat-finder will rise in pitch when a satellite signal is received.

Follow the operating instructions supplied with your dish antenna when finding a satellite.

When you have found the Astra 2 satellite press **EXIT**.

Scan for new TV and Radio channels

1



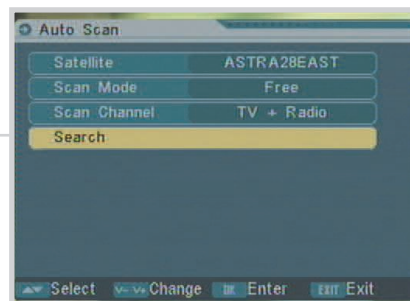
When the antenna has been successfully positioned to receive Astra 2 follow these steps to add the latest channels.

Press the **MENU** button on the remote control.

Select the *Installation* menu using the **VOLUME UP/DOWN** key.

Highlight *Auto Scan* using the **CHANNEL UP/DOWN** key and press **OK**.

2

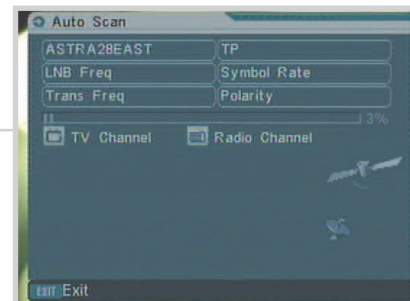


Scroll down the *Auto Scan* menu using the **CHANNEL DOWN** key.

Use **VOLUME UP/DOWN** keys to ensure:
Satellite is set on ASTRA 28 EAST
Scan mode is set on Free
Scan channel is set to TV + Radio

Then highlight *Search* and press **OK**

3



Searching for channels may take several minutes. When complete press **EXIT**.

Your receiver now contains the latest Free to View channels from the Astra 2 satellite.

Note: We advise you scan for new channels periodically.