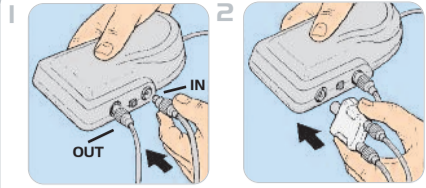
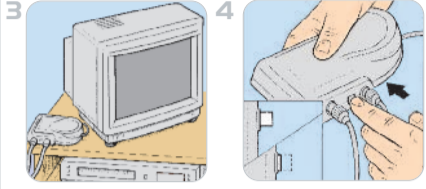


## INSTALLATION INSTRUCTIONS



Connect the coaxial leads from your TV or hi-fi and aerial download (single or diplexer) into the booster.

To split the signal from the output, a TV/FM diplexer (or TV/VHF diplexer for DAB) and flylead will be required (not supplied).



The booster can be left free standing behind your TV or hi-fi or in any convenient position. Plug into a convenient 3 pin UK mains socket and switch on.

**GAIN ADJUSTMENT**  
The booster has a switched gain. Push switch in for high gain, out for low gain. See below for permanent fixing details.

## OTHER FEATURES

- ★ Signal power boost switch for high power and low power option
- Also suitable for terrestrial analogue UHF TV signals

## SPECIFICATIONS

- 230V-50Hz
- Less than 5 watts
- Fully screened
- Forward Gain typically per outlet 18dB
- Switched gain 6dB
- Noise figure typically 4.5dB
- Forward frequency coverage 40-860MHz
- Reverse frequency coverage 5-65MHz
- Designed to BSEN60065:1998
- Designed for indoor use only

## USER INSTRUCTIONS INSIDE



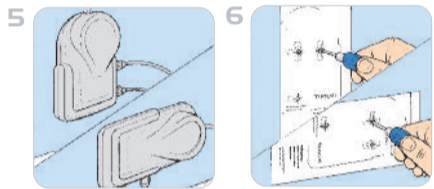
RoHS Compliant



Made in China Iss 1

Maxview Reserve the right to change specifications without prior notice

**FIXING TEMPLATE**  
Use for permanent fixing



**PERMANENT FIXING**  
Decide on the orientation of the booster, taking into consideration where the cables run in and out.

Using this template locate a suitable position on a loft joist, inside wall or skirting board. Mark the 2 screw hole positions.

For permanent wall or loft fixing, use No8 or M4 countersunk head screws. For wall fixing we also recommend the use of wall plugs.

HGBIINSERT Iss 1

Fig 1

TV/FM/DAB with option of Video and/or Digital Satellite and/or Digital terrestrial TV to all TV's

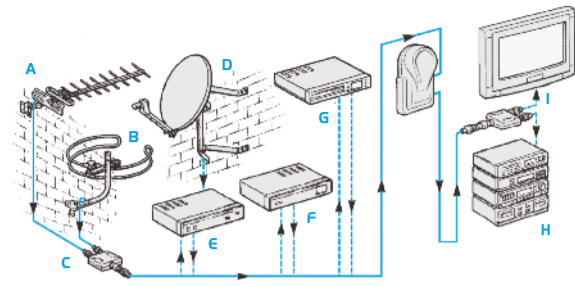
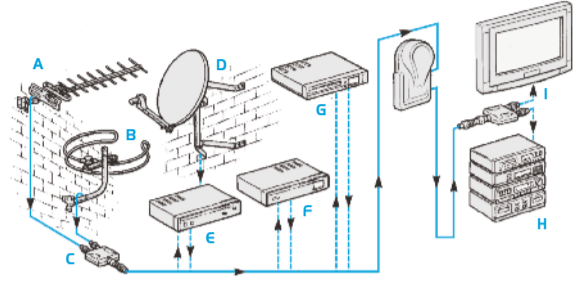


Fig 2

TV/FM/DAB to all TV's. Option of Video and/or Digital Satellite and/or Digital Terrestrial TV to 1 TV only



## ILLUSTRATION KEY

- A: UHF TV Aerial
- B: FM/DAB Radio
- C: TV/FM Diplexer
- D: Satellite system
- E: SKY™ Digl Box
- F: Digital Freeview™ Box
- G: Video/DVD Recorder
- H: Hi-Fi
- I: TV

Essential RF coax connections

Optional equipment RF coax connections

## 5 YEAR GUARANTEE

This signal booster is guaranteed against defective parts or workmanship for 5 years from time of purchase. This excludes any malfunction caused by improper use, accidental or malicious damage or removal of inner casing. This does not affect your statutory rights.

## SAFETY WARNING

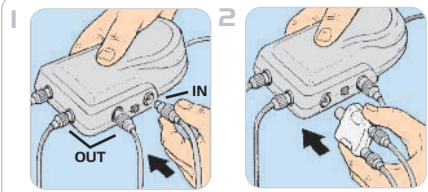
- Always follow manufacturer's operating and safety instructions when using tools and/or equipment
- Before starting work check for hidden electrical wiring or plumbing
- To avoid injury always route cables or wiring carefully
- Before making any connections switch electricity off at the mains
- If in doubt consult a qualified electrician or professional aerial installer

## MAXVIEW

- Helpline: +44 (0) 1553 811000
- Email: [cust\\_serv@maxview.co.uk](mailto:cust_serv@maxview.co.uk)
- Visit: [www.maxview.co.uk](http://www.maxview.co.uk)

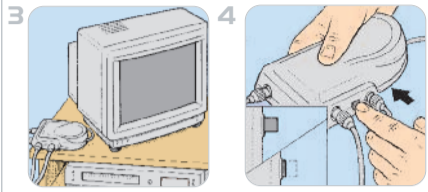
Maxview Reserve the right to change specifications without prior notice

## INSTALLATION INSTRUCTIONS



Connect the coaxial leads from your TV's or hi-fi and aerial downlead (single or diplexed) into the booster.

To split the signal from the output, a TV/FM diplexer (or TV/VHF diplexer for DAB) and flylead will be required (not supplied).



The booster can be left free standing behind your TV or hi-fi or in any convenient position. Plug into a convenient 3 pin UK mains socket and switch on.

**GAIN ADJUSTMENT**  
The booster has a switched gain. Push switch in for high gain, out for low gain. See below for permanent fixing details.

## OTHER FEATURES

- ★ Signal power boost switch for high power and low power option
- Also suitable for terrestrial analogue UHF TV signals

## SPECIFICATIONS

- 230V-50Hz
- Less than 5 watts
- Fully screened
- Forward Gain typically per outlet 13dB
- Switched gain 6dB
- Noise figure typically 5dB
- Forward frequency coverage 40-860MHz
- Reverse frequency coverage 5-65MHz
- Designed to BS EN 60065:1998
- Designed for indoor use only

## USER INSTRUCTIONS INSIDE



RoHS Compliant



Made in China Iss 1

Fig 1

TV/FM/DAB with option of Video and/or Digital Satellite and/or Digital terrestrial TV to all TV's

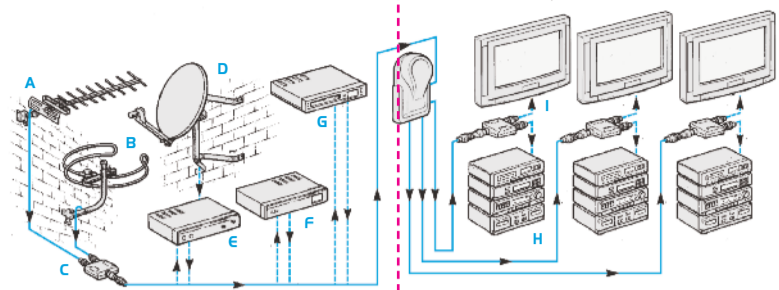
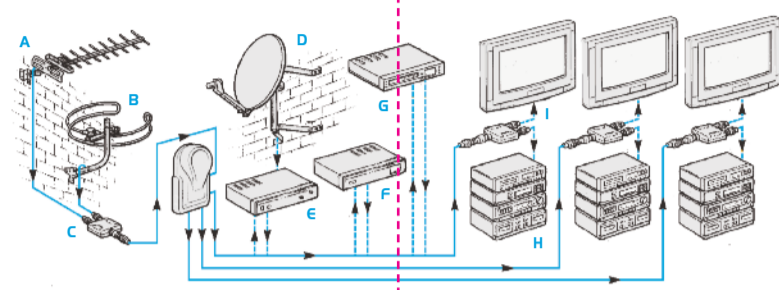


Fig 2

TV/FM/DAB to all TV's. Option of Video and/or Digital Satellite and/or Digital Terrestrial TV to 1 TV



## ILLUSTRATION KEY

- A: UHF TV Aerial
- B: FM/DAB Radio
- C: TV/FM Diplexer
- D: Satellite System
- E: SKY™ Digi Box
- F: Digital Freeview™ Box
- G: Video/DVD Recorder
- H: Hi-Fi
- I: TV

Essential RF coax connections

Optional equipment RF coax connections

## 5 YEAR GUARANTEE

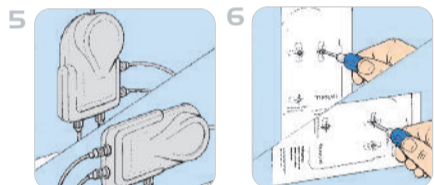
This signal booster is guaranteed against defective parts or workmanship for 5 years from time of purchase. This excludes any malfunction caused by improper use, accidental or malicious damage or removal of inner casing. This does not affect your statutory rights.

## SAFETY WARNING

- Always follow manufacturer's operating and safety instructions when using tools and/or equipment
- Before starting work check for hidden electrical wiring or plumbing
- To avoid injury always route cables or wiring carefully
- Before making any connections switch electricity off at the mains
- If in doubt consult a qualified electrician or professional aerial installer

## MAXVIEW

- Helpline: +44 (0) 1553 811000
  - Email: [cust\\_serv@maxview.co.uk](mailto:cust_serv@maxview.co.uk)
  - Visit: [www.maxview.co.uk](http://www.maxview.co.uk)
- Maxview Reserve the right to change specifications without prior notice



**PERMANENT FIXING**  
Decide on the orientation of the booster, taking into consideration where the cables run in and out.

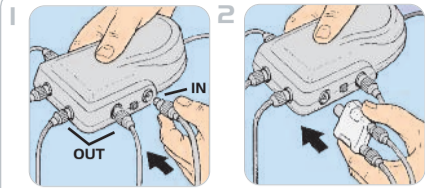
Using this template locate a suitable position on a loft joist, inside wall or skirting board. Mark the 2 screw hole positions.

For permanent wall or loft fixing, use No 8 or M 4 countersunk head screws. For wall fixing we also recommend the use of wall plugs.

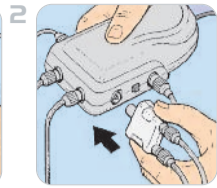
HGB3INSERT Iss 1

FIXING TEMPLATE  
Use for permanent fixing

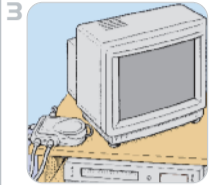
## INSTALLATION INSTRUCTIONS



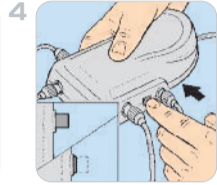
Connect the coaxial leads from your TV's or hi-fi and aerial download (single or diplexed) into the booster.



To split the signal from the output, a TV/FM diplexer (or TV/VHF diplexer for DAB) and flylead will be required (not supplied).



The booster can be left free standing behind your TV or hi-fi or in any convenient position. Plug into a convenient 3 pin UK mains socket and switch on.



**GAIN ADJUSTMENT**  
The booster has a switched gain. Push switch in for high gain, out for low gain. See below for permanent fixing details.

## OTHER FEATURES

- \* Signal power boost switch for high power and low power option
- Also suitable for terrestrial analogue UHF TV signals

## SPECIFICATIONS

- 230V-50Hz
- Less than 5 watts
- Fully screened
- Forward Gain typically per outlet 10dB
- Switched gain 6dB
- Noise figure typically 5dB
- Forward frequency coverage 40-860MHz
- Reverse frequency coverage 5-65MHz
- Designed to BSEN60065:1998
- Designed for indoor use only

## USER INSTRUCTIONS INSIDE



RoHS Compliant



Made in China Iss 1

Fig 1

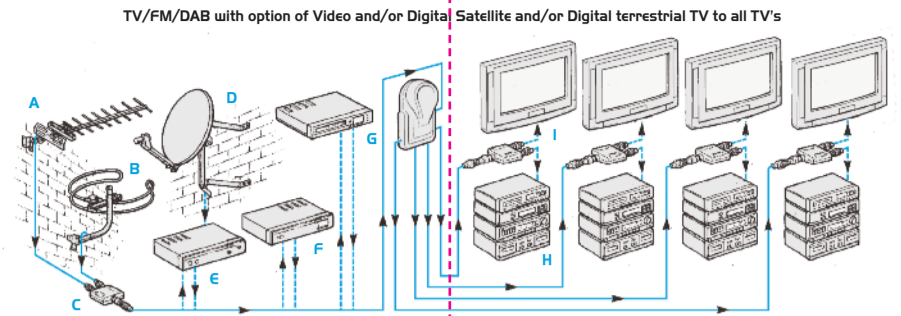
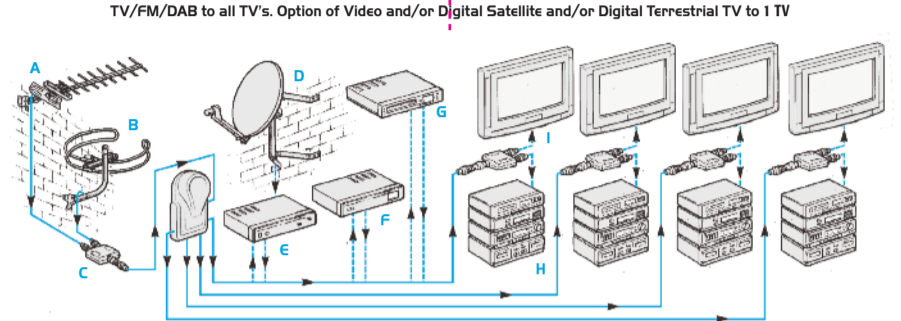


Fig 2



## ILLUSTRATION KEY

- A: UHF TV Aerial
- B: FM/DAB Radio
- C: TV/FM Diplexer
- D: Satellite System
- E: SKY™ Digi Box
- F: Digital Freeview™ Box
- G: Video/DVD Recorder
- H: Hi-Fi
- I: TV

Essential RF coax connections

Optional equipment RF coax connections

## 5 YEAR GUARANTEE

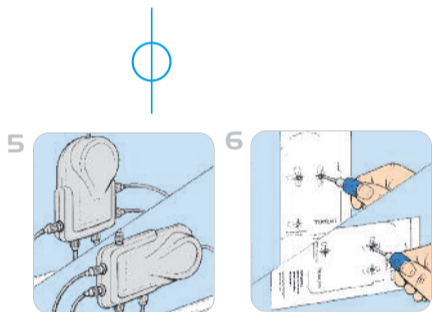
This signal booster is guaranteed against defective parts or workmanship for 5 years from time of purchase. This excludes any malfunction caused by improper use, accidental or malicious damage or removal of inner casing. This does not affect your statutory rights.

## SAFETY WARNING

- Always follow manufacturer's operating and safety instructions when using tools and/or equipment
- Before starting work check for hidden electrical wiring or plumbing
- To avoid injury always route cables or wiring carefully
- Before making any connections switch electricity off at the mains
- If in doubt consult a qualified electrician or professional aerial installer

## FIXING TEMPLATE

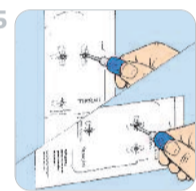
Use for permanent fixing



**PERMANENT FIXING**  
Decide on the orientation of the booster, taking into consideration where the cables run in and out.

For permanent wall or loft fixing, use No8 or M4 countersunk head screws. For wall fixing we also recommend the use of wall plugs.

HGB4INSERT Iss 1



Using this template locate a suitable position on a loft joist, inside wall or skirting board. Mark the 2 screw hole positions.

## MAXVIEW

- Helpline: +44 (0) 1553 811000
- Email: [cust\\_serv@maxview.co.uk](mailto:cust_serv@maxview.co.uk)
- Visit: [www.maxview.co.uk](http://www.maxview.co.uk)

Maxview Reserve the right to change specifications without prior notice

